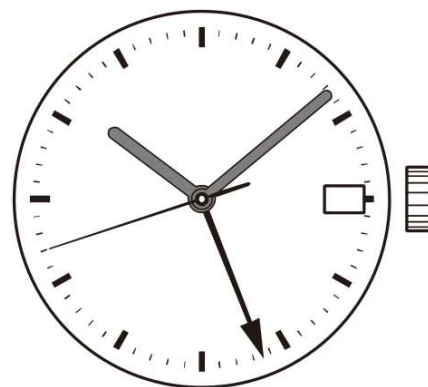


Watch Movement Specification and Drawing

Standard Mechanical Movement

NH34A



Movement Size: **12"**

Diameter: **Φ27.40mm** (Φ29.36mm with Dial Holding Spacer)

Height: **5.32mm**

Items	Ver.	Items	Ver.
Specification	1		
Appearance - 1	1		
Appearance - 2	1		
Casing	1		
Hand Fitting	1		
Hand Setting Stem	1		
Dial	2		
Assembly Plan	1		
Hands	1		

CAL.NH34A 12 Ligne Mechanical Movement

Three Hands with Date Center 24 Hour Hand

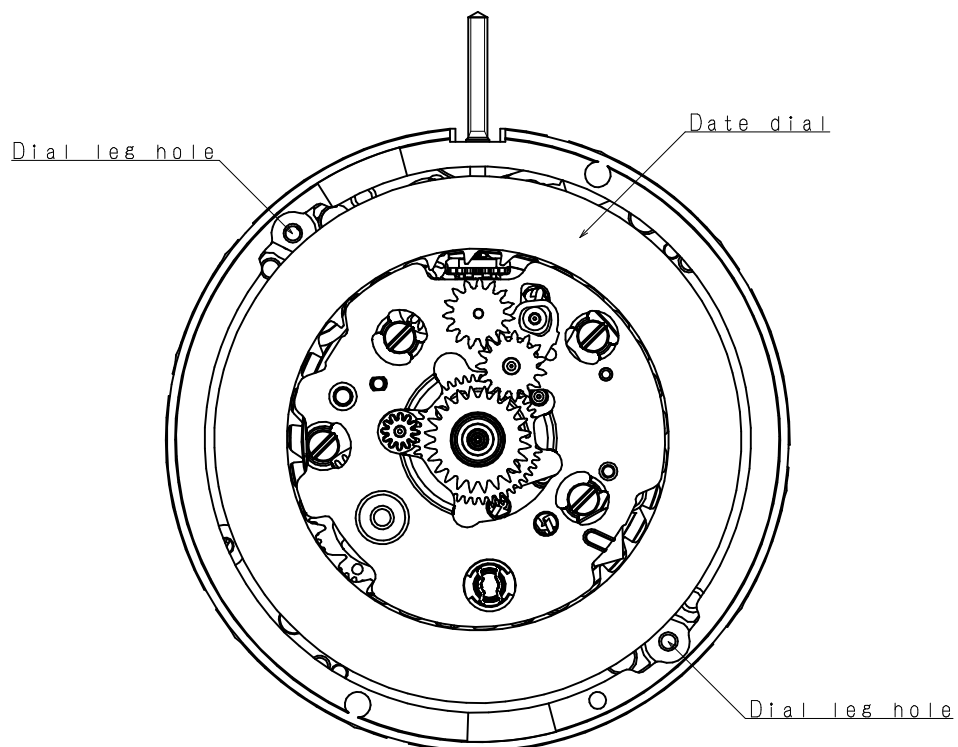
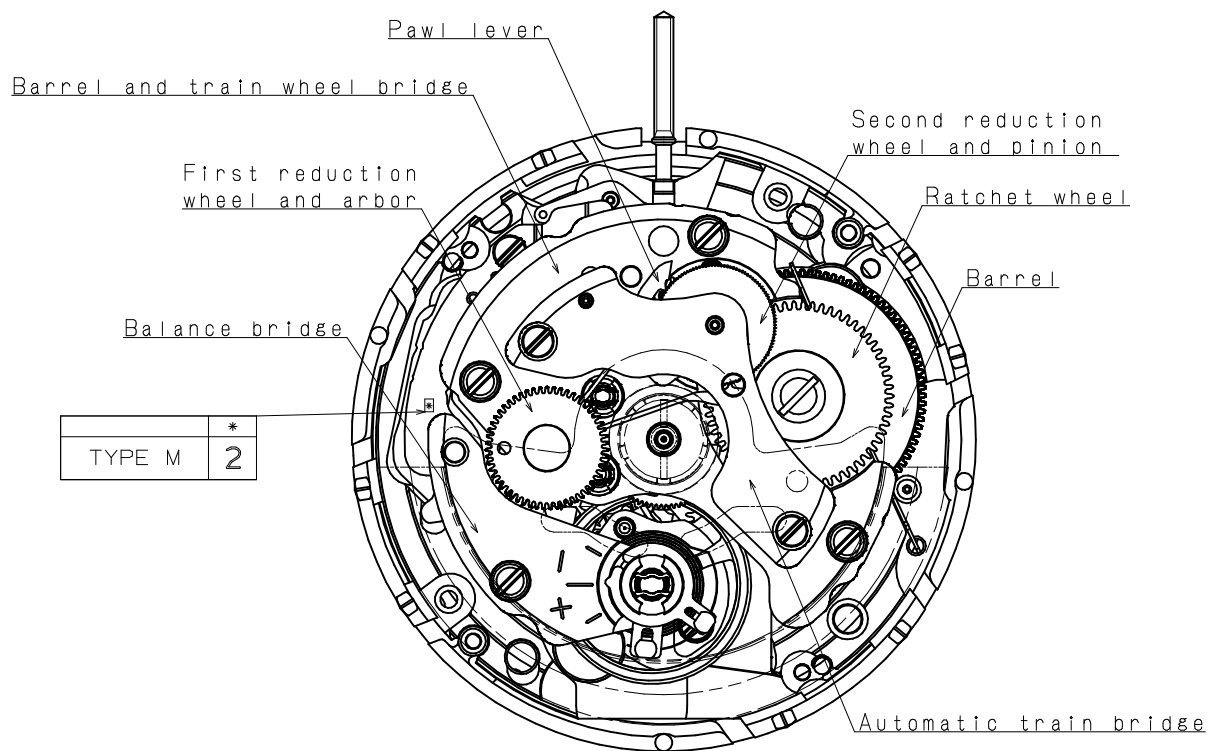
1. FUNCTION

- Jewel 24 jewels
- Accuracy -20 ~ +40 seconds / day (23 ± 2 °C)
- Regulation hands unbalance
 - Hour hand : Less than $1.50 \mu\text{N}\cdot\text{m}$ (150 mg·mm)
 - Minute hand : Less than $1.25 \mu\text{N}\cdot\text{m}$ (125 mg·mm)
 - Second hand : Less than $0.60 \mu\text{N}\cdot\text{m}$ (60 mg·mm)
 - Center 24 hour hand : Less than $1.20 \mu\text{N}\cdot\text{m}$ (120 mg·mm)
- Additional function
 - Manual winding
 - Automatic winding with ball bearing
 - Both winding with one way clutch
 - Second hand stop mechanism
 - Date display with quick date correction
 - 24 hour hand or second time zone

2. USE AND TEST CONDITION

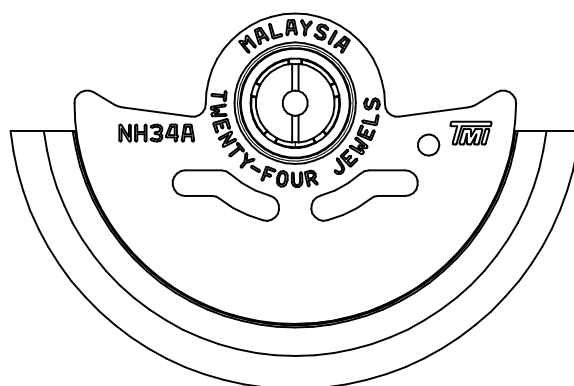
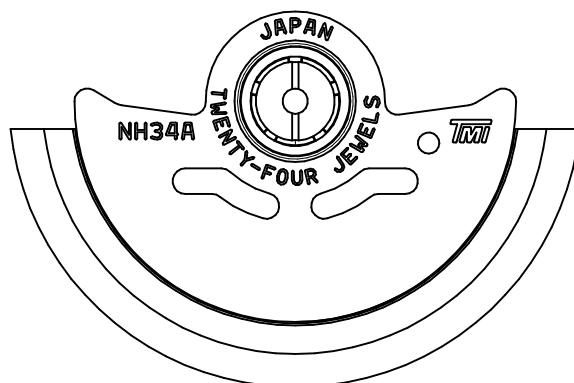
- Vibration frequency 21,600 vibrations per hour
- Duration time More than 41 hours
- Antimagnetic $\geq 4800 \text{ A / m}$ (Direct current magnetic field)
- Test of accuracy 20 seconds (Duration of measurement)
- Casing
 - *1. Screw type case back is required
 - *2. Non-corresponding with Diver's watch

*** All specifications are subject to change without notice.**



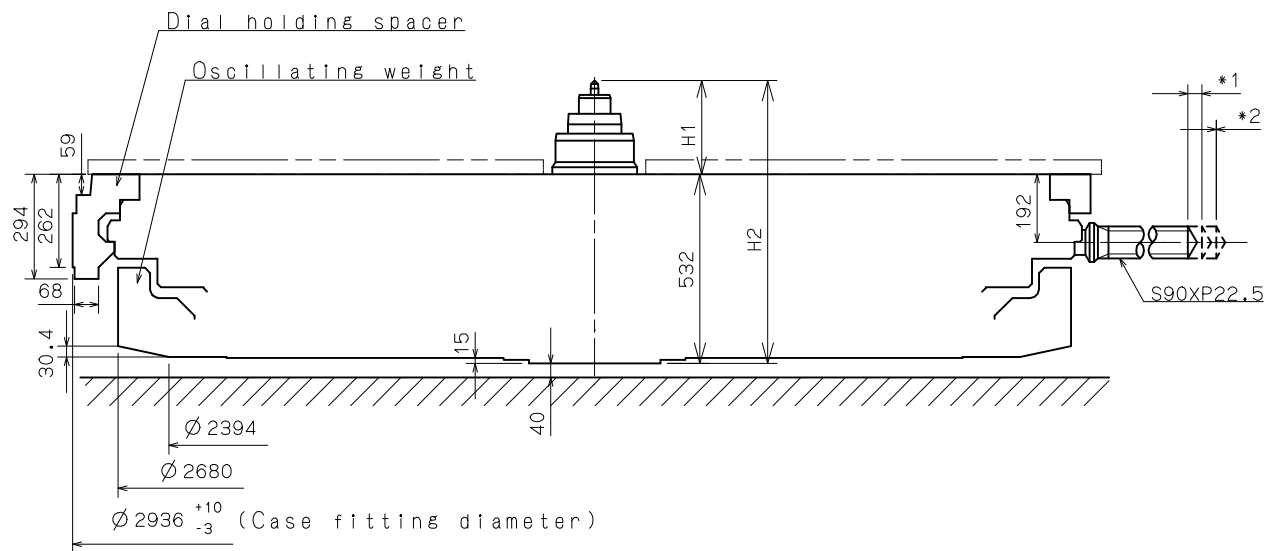
Oscillating weight

Marking	Country of origin
JAPAN	JAPAN
MALAYSIA	MALAYSIA

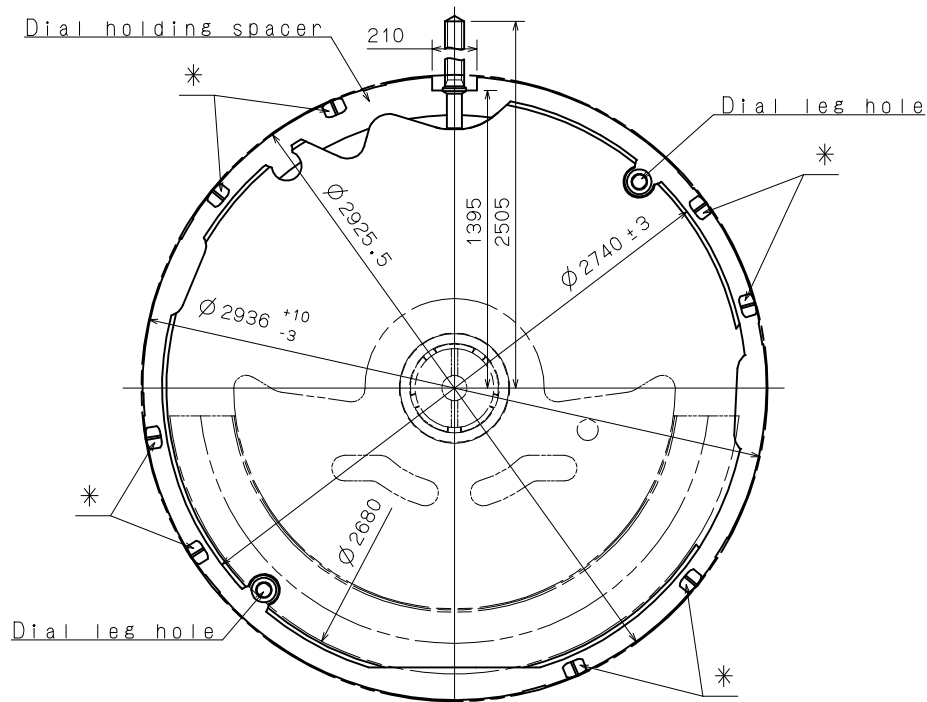


*1. First pull out stroke 39.9

*2. Second pull out stroke 40.0



Center post 中心柱位		TYPE M 一般針高
Maximum height from dial support surface 與錶面墊圈平面的最大高度	H1	266.7
Total height incl. movement 機芯總高度	H2	798.7

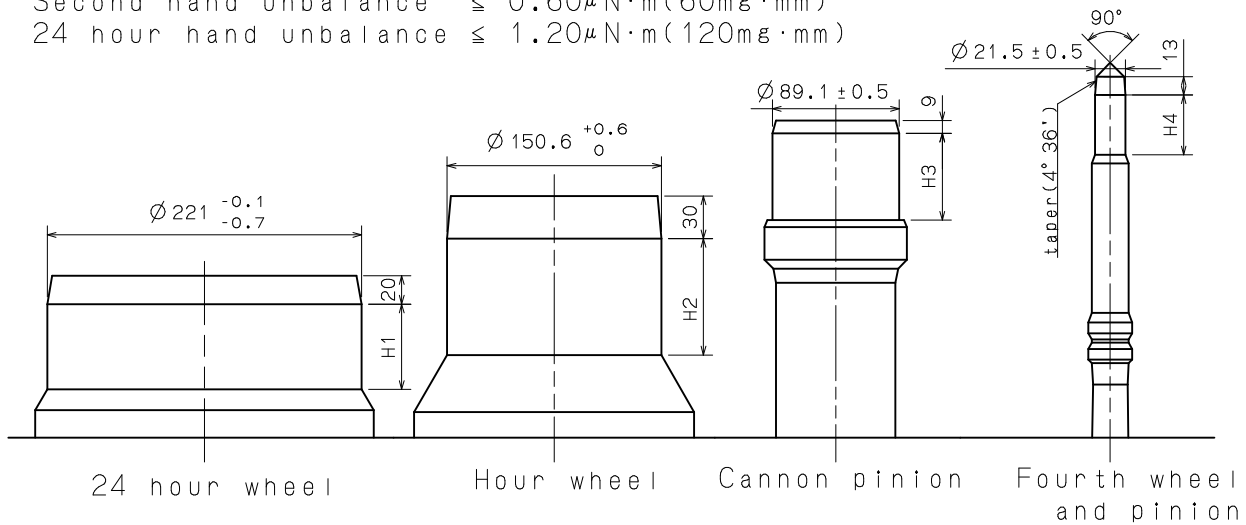


*Projection to fix movement to case.

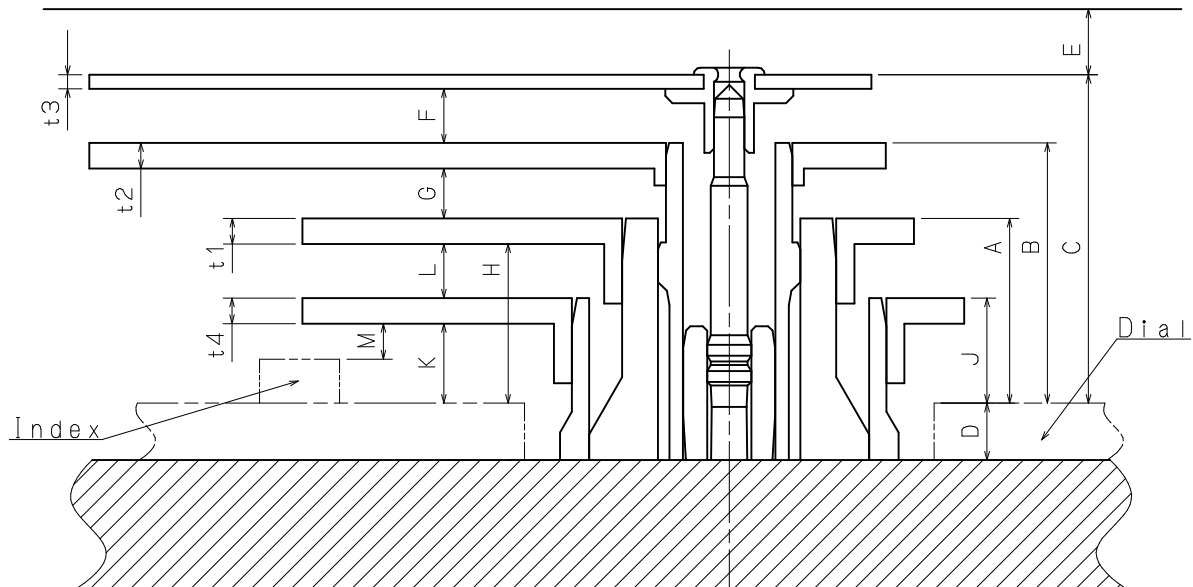
Unit : 1=1/100mm

Version : 1

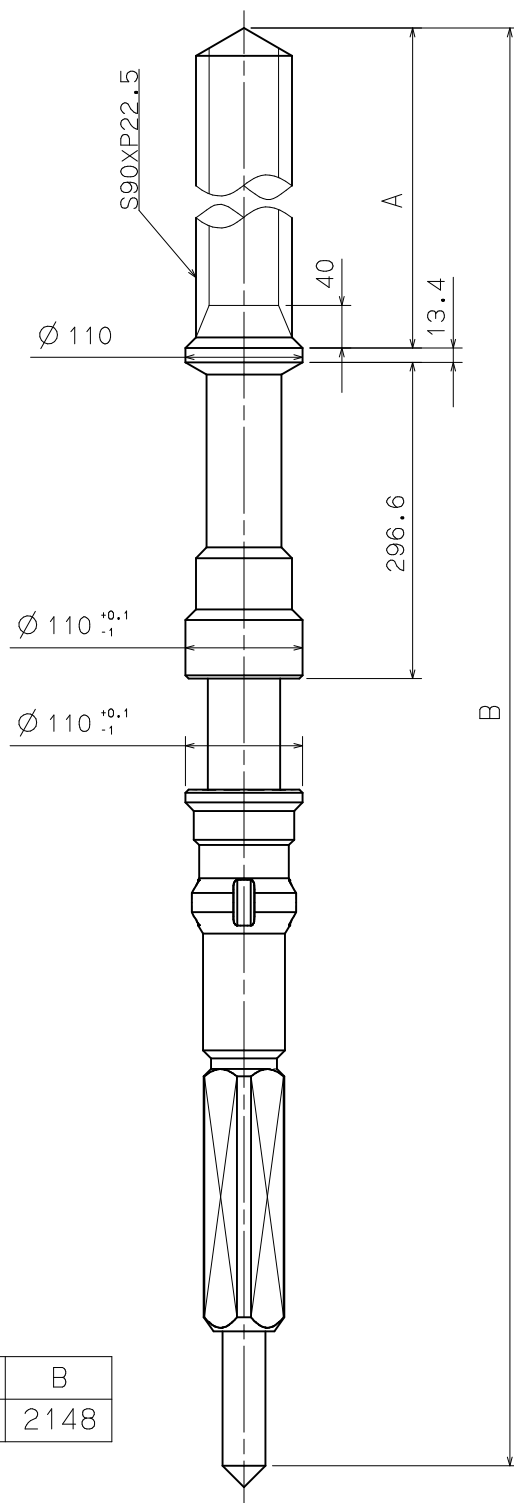
Hour hand unbalance $\leq 1.50\mu\text{N}\cdot\text{m}$ (150mg·mm)
 Minute hand unbalance $\leq 1.25\mu\text{N}\cdot\text{m}$ (125mg·mm)
 Second hand unbalance $\leq 0.60\mu\text{N}\cdot\text{m}$ (60mg·mm)
 24 hour hand unbalance $\leq 1.20\mu\text{N}\cdot\text{m}$ (120mg·mm)



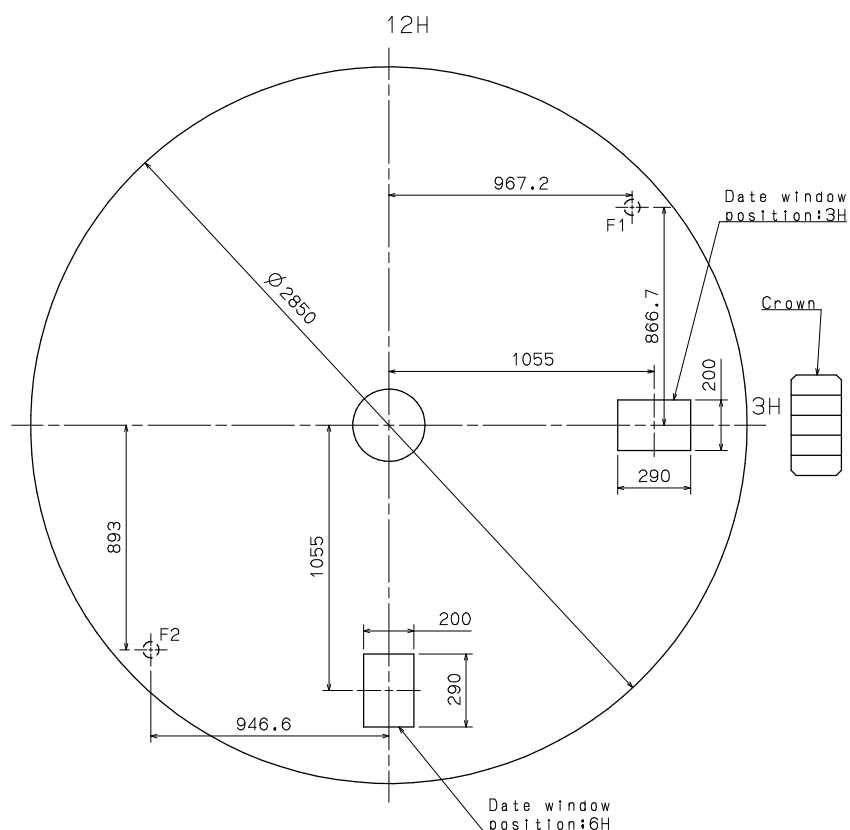
	Part. No.				Dimension			
	24 hour wheel 24小時針輪	Hour wheel 時針輪	Cannon pinion 分針輪(十反)	Fourth wheel and pinion 秒針輪	H1	H2	H3	H4
TYPE M 一般針高	0278 333	0273 333	1225 333	0144 185	60	81.8	61	42



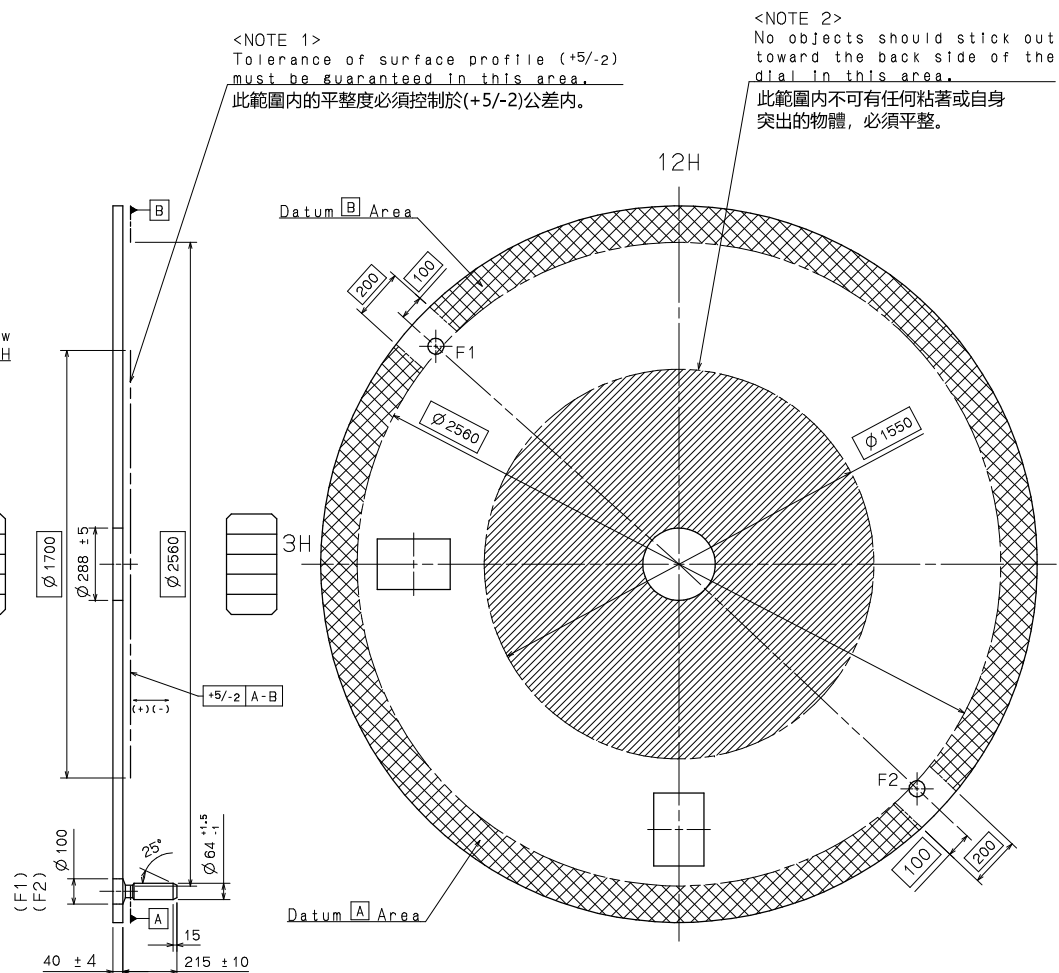
	A	B	C	D	E	F	G	H	J	K	L	M	t1	t2	t3	t4
TYPE M 一般針高	130	183	231	40	45	38	35	112	74	56	38	25	18	18	10	18



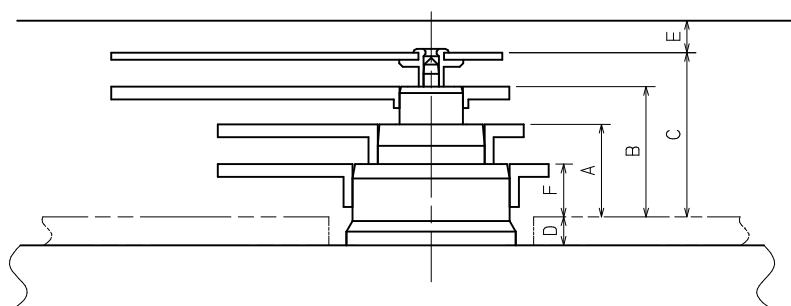
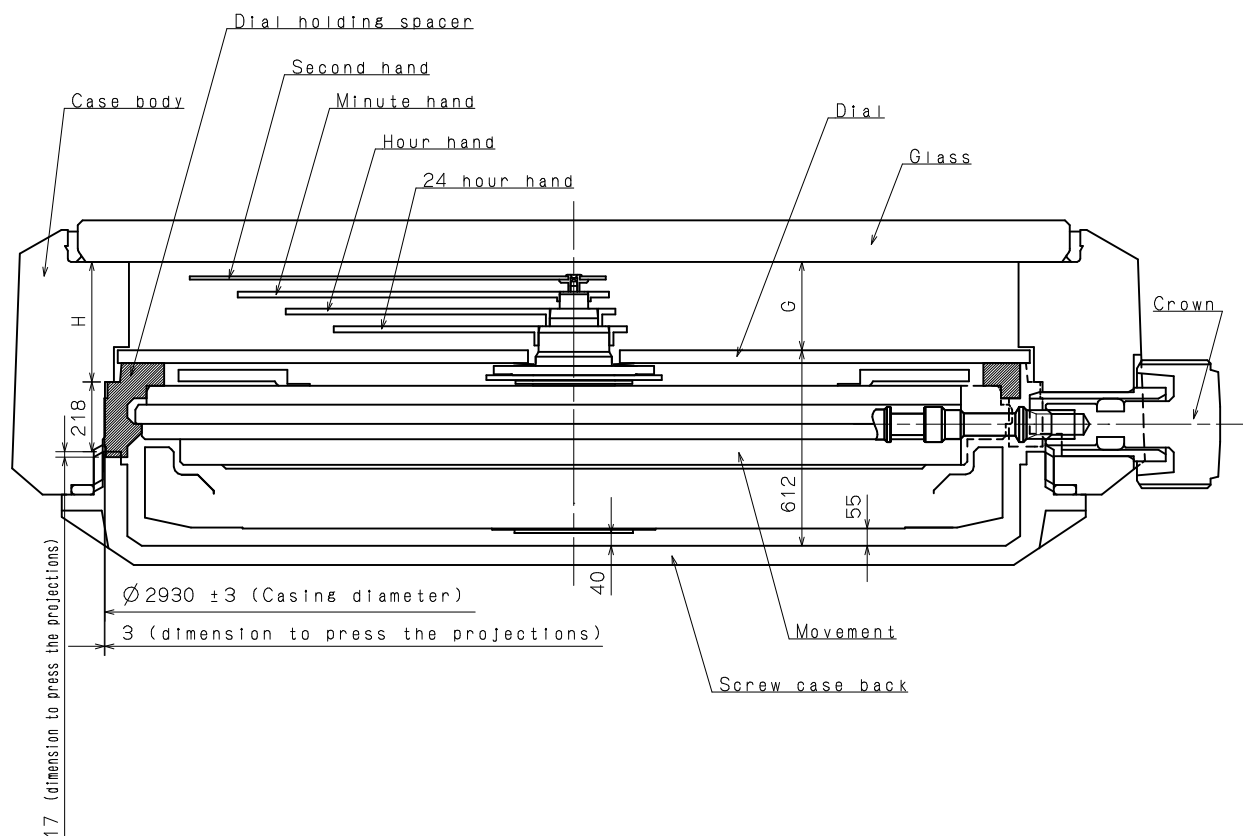
Part No.	A	B
0351 200	1100	2148



<Front side>

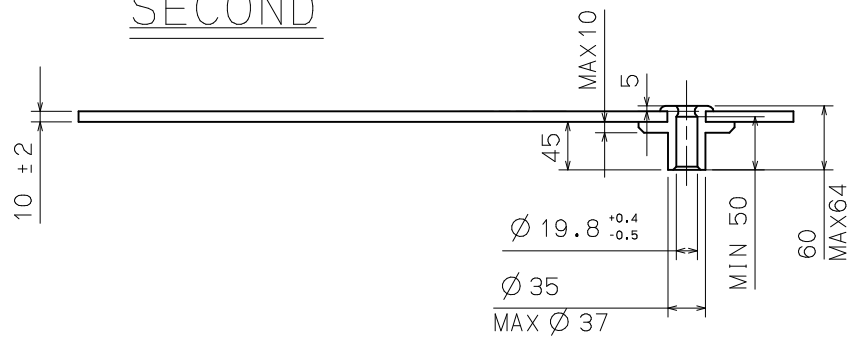


<Back side>

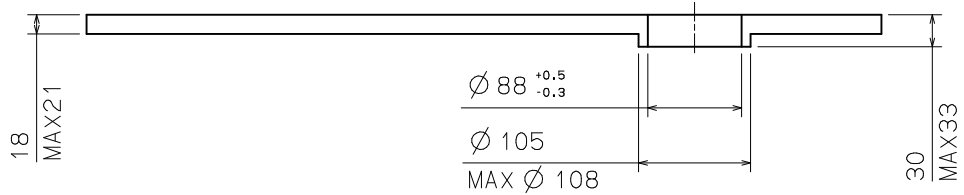


	A	B	C	D	E	F	G	H
TYPE M	130	183	231	40	45	74	276	375

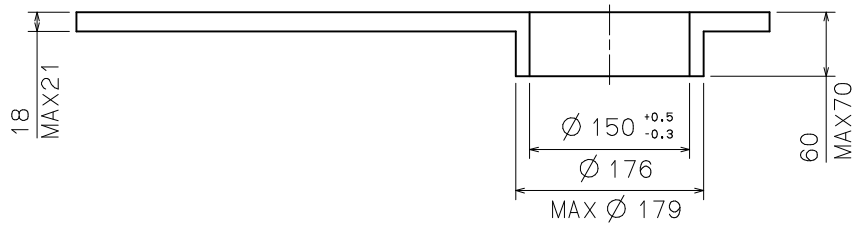
SECOND



MINUTE



HOUR



24 HOUR

