

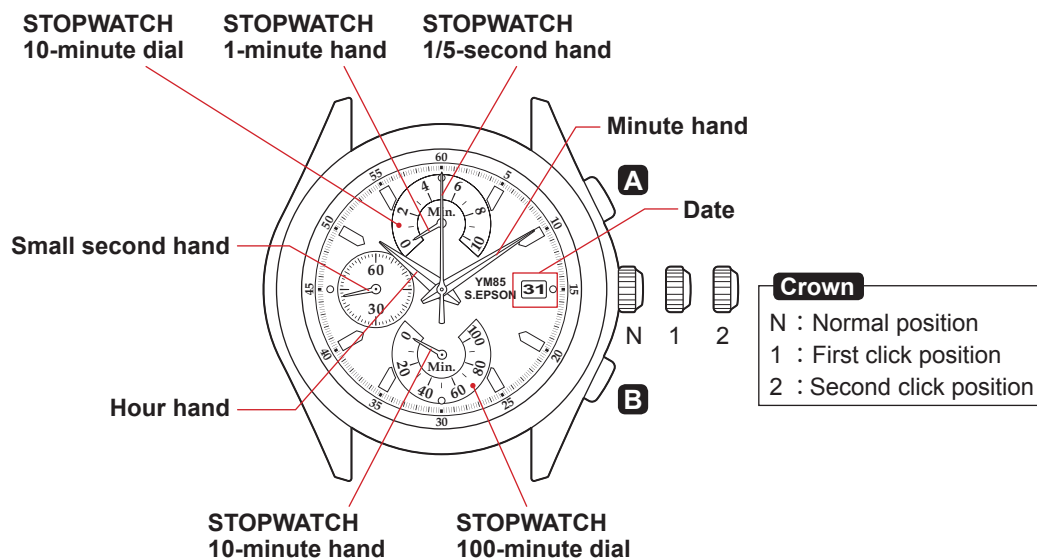
CAL. YM85

1/5 SECOND, DOUBLE RETROGRADE CHRONOGRAPH

1/4 Instructions

Features

- ◆ Hour, Minute and Small Second Hands
- ◆ Date
- ◆ Stopwatch
 - 3 Stopwatch hands: 1/5-second, 1-minute and 10-minute hand.
 - The stopwatch can measure up to 109' 59" 8.
 - Sprit time measurement.



Movement Size	12'''
Outside Diameter	27.60 mm (12H-6H) x 24.00 mm (3H-9H)
Casing Diameter	27.00 mm (12H-6H)
Height	3.70 mm (Include battery)
Battery	SR927SW
Battery Life Approx.	3 years

◆ Battery Life Indicator

When the battery nears its end, the small second hand moves at two-second intervals instead of normal one-second intervals. In that case, have the battery replaced with a new one as soon as possible.

Note: The watch remains accurate while the small second hand is moving at two-second intervals.



S.EPSON Products

JAPAN TECHNOLOGY & QUALITY

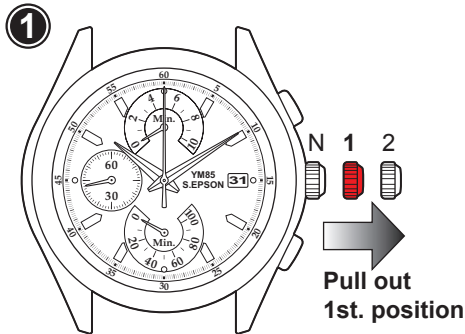
www.timemodule.com

CAL. YM85

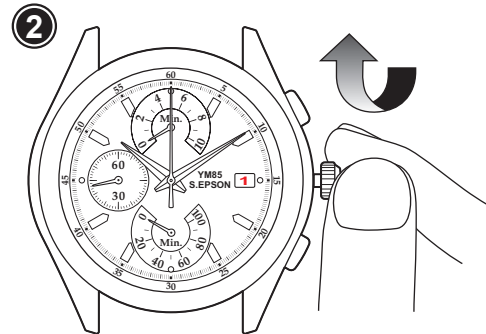
1/5 SECOND, DOUBLE RETROGRADE CHRONOGRAPH

2/4 Instructions

How to Set Time and Date:

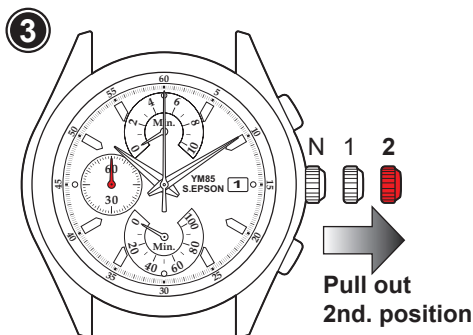


- Pull crown out to 1st click position.

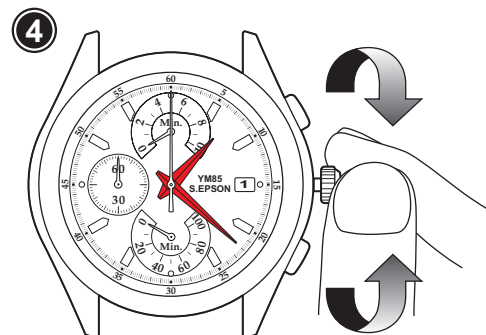


- Turn the crown clockwise until the previous day's date appears.

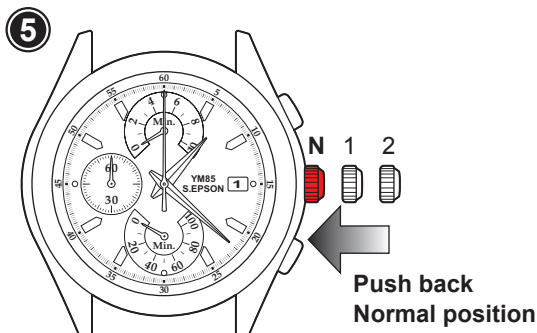
Note: Do not set the date between 9:00 PM and 1:00 AM. Otherwise, the date may not change properly.



- Pull crown out to the 2nd click position when the second hand is at the 12 o'clock position.



- Turn clockwise to advance the hour and minute hands past 12:00 AM. Doing so will advance the date to the current date.
- Set the hour and minute hands to the desired time taking AM or PM into consideration.



- Push crown back to normal position.

Recommend:

- When setting the Minute hand, first advance it 4 to 5 minutes ahead of the desired time and then turn it back to the exact minute.



S.EPSON Products

JAPAN TECHNOLOGY & QUALITY

www.timemodule.com

CAL. YM85

1/5 SECOND, DOUBLE RETROGRADE CHRONOGRAPH

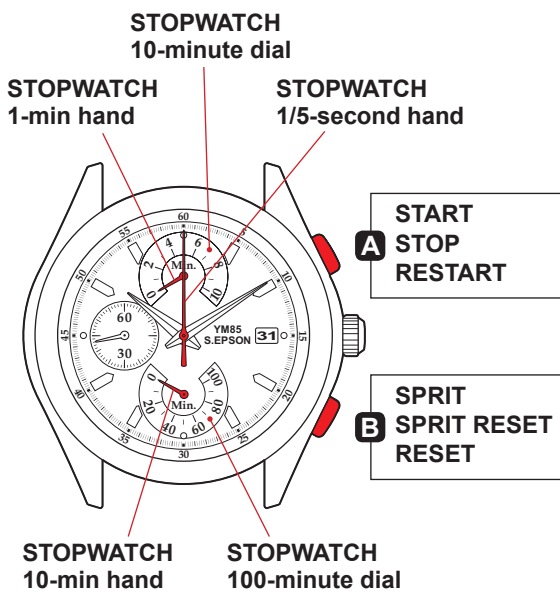
3/4 Instructions

How to Use Stopwatch Functions:

The stopwatch can measure up to 109' 59" 8.

When the measurement reaches 300 minutes, the stopwatch automatically stops counting.

Then the 1/5-second hand stops at 12 o'clock position, the 1-minute hand stops at "0" position on 10-minute dial, and the 10-minute hand stops at "100" position on 100-minute dial.



Standard Measurement



Accumulated Elapsed Time Measurement



Sprit Time Measurement



Measurement of Two Competitors



- 1/5-second hand is capable of timing 300 minutes. (60 seconds x 300 times)
- 10-minute dial with a retrograde 1-minute hand is capable of timing 300 minutes.
When the minute counting reaches 10 minutes, the 1-minute hand immediately returns and continues counting from "0" position and again after 300 minutes. (10 minutes x 30 times)
- 100-minute dial with a retrograde 10-minute hand is capable of timing 300 minutes.
When the minute counting reaches 110 minutes, the 10-minute hand immediately returns and continues counting from "10" position and again after 300 minutes. (100 minutes x 3 times)

* Before using the stopwatch, be sure to check that the crown is set at the normal position and that the STOPWATCH hands are reset to the "0" position.

Note: If the STOPWATCH hands do not return to the "0" position when the stopwatch is reset to "0", follow the procedure in "Stopwatch Hand Position Adjustment".

Demonstration:

- When the stopwatch is reset, pressing button "B" for 2 seconds starts the demonstration of stopwatch hands.
- If either button "A" or "B" is pressed during a demonstration, the demonstration will be stopped and the stopwatch will be reset.



S.EPSON Products

JAPAN TECHNOLOGY & QUALITY

www.timemodule.com

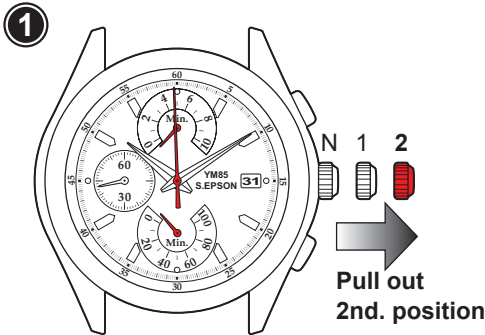
CAL. YM85

1/5 SECOND, DOUBLE RETROGRADE CHRONOGRAPH

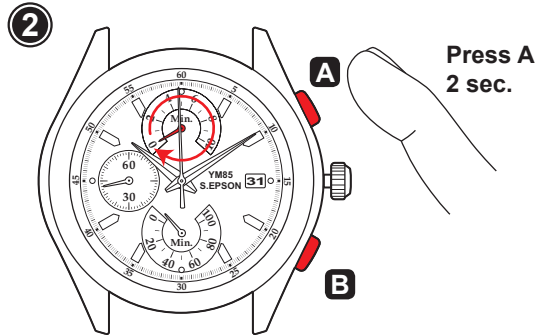
4/4 Instructions

Stopwatch Hand Position Adjustment:

If the Stopwatch hands are not in "0" position, follow the procedures below to set them to "0" position.



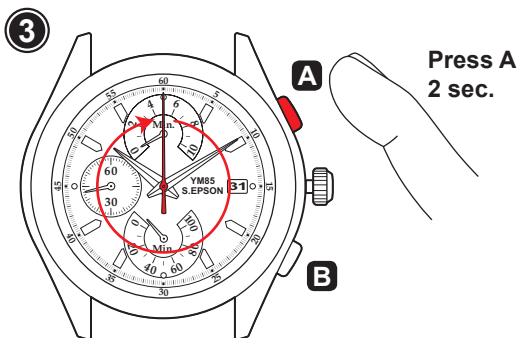
- Pull the crown out to 2nd click position.



- Press button "A" for 2 seconds.
 - Stopwatch 1-minute hand turns a full round and can now be set to correct position.

Note: When only time adjustment for stopwatch 1-minute hand is required, it needs to turn a full round.

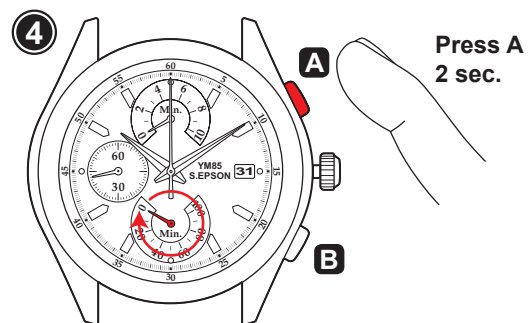
- Press button "B" repeatedly to set it to "0" position.
Note: STOPWATCH 1-minute hand move quickly if button "B" is kept pressed.



- Press button "A" for 2 seconds.
 - Stopwatch 1/5-second hand turn a full round and can now be set to correct position.

- Press button "B" repeatedly to set it to "0" position.

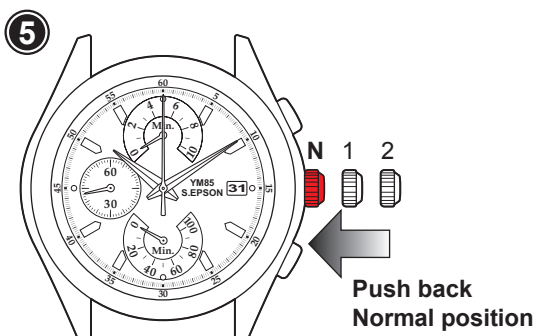
Note: STOPWATCH 1/5-second hand move quickly if button "B" is kept pressed.



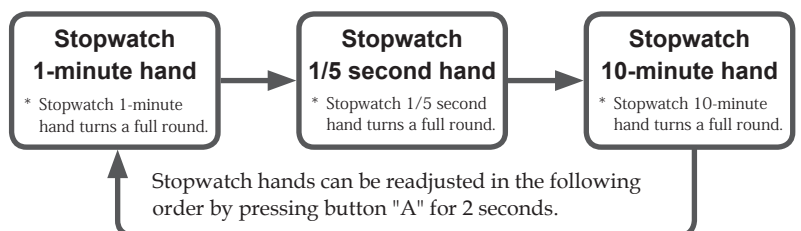
- Press button "A" for 2 seconds.
 - Stopwatch 10-minute hand turns a full round and can now be set to correct position.

Note: When only time adjustment for stopwatch 10-minute hand is required, it needs to turn a full round.

- Press button "B" repeatedly to set it to "0" position.
Note: STOPWATCH 10-minute hand move quickly if button "B" is kept pressed.



- Push crown back to normal position.



S.EPSON Products

JAPAN TECHNOLOGY & QUALITY

www.timemodule.com